

# Fe

## Iron test

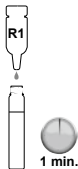
For fresh and salt water

### Test preparation:

- 1 Fill both tubes up to the mark with the test water.



- 2 Add the content of the **Fe (HR) R1 ampule** to the test, close with screw top lid and mix. Leave standing for 1 minute.



### Measuring with AQUA-CHECK:

- 1 Reference measurement.
- 2 Test measurement.



You will find important information on your measurement value at [www.aqua-check.de](http://www.aqua-check.de). Please observe the safety notes for handling chemicals (see rear).

# Fe

# Iron test

Version 1.0 • 03/2012



**Harmful**

## Fe (HR) R1

R20/21/22: Harmful by inhalation, in contact with skin and if swallowed.

R43: May cause sensitisation by skin contact.

R52/53: Harmful to aquatic organisms, may cause long-term adverse effects in the aquatic environment.

S2: Keep out of the reach of children.

S25: Avoid contact with eyes.

S28: After contact with skin, wash immediately with plenty of water.

S46: If swallowed, seek medical advice immediately and show this container or label.

***Contains ammonium mercaptoacetate, thioglycolic acid***

**Take packaging with product residues to hazardous or special waste disposal.**

**Söll GmbH • Fuhrmannstraße 6 • D-95030 Hof • [www.soelltec.de](http://www.soelltec.de) • [info@soelltec.de](mailto:info@soelltec.de)**