



# Nitrate test 6-30mg/L

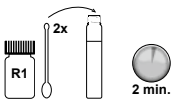
For fresh and salt water

## Test preparation:

- 1 Fill both tubes up to the mark with the test water.



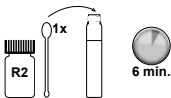
- 2 Add **2 small** level measuring spoons of  $\text{NO}_3^-$  R1 to one of the two pipes (test), close with the screw top lid and dissolve by shaking. Leave standing for 2 minutes.



- 3 Add **1 big** level measuring spoon of  $\text{NO}_3^-$  R2 to the test, close with the screw top lid and dissolve by shaking.



Measure after exactly 6 minutes reaction time.



## Measuring with AQUA-CHECK:

- 1 Reference measurement.
- 2 Test measurement.



Standard procedure deviation s(xo):  $\pm 3.0$  mg/L



You will find important information on your measurement value at [www.aqua-check.de](http://www.aqua-check.de). Please observe the safety notes for handling chemicals (see rear).



# Nitrate test

Version 1.0 • 03/2012



**Hazard**

## $\text{NO}_3^-$ R1 (nitrate test)

R51/53: Toxic to aquatic organisms, may cause long-term adverse effects in the aquatic environment.

S2: Keep out of the reach of children.

S24/25: Avoid contact with skin and eyes.

S46: If swallowed, seek medical advice immediately and show this container or label.

S61: Avoid release to the environment. Refer to special instructions/ Safety data sheets.



**Irritant**

## $\text{NO}_3^-$ R2 (nitrate test)

R36: Irritating to eyes.

S2: Keep out of the reach of children.

S26: In case of contact with eyes, rinse immediately with plenty of water and seek medical advice.

S46: If swallowed, seek medical advice immediately and show this container or label.

**Take packaging with product residues to hazardous or special waste disposal.**

**Söll GmbH • Fuhrmannstraße 6 • D-95030 Hof • [www.soelltec.de](http://www.soelltec.de) • Tel. +49(0)92 81/ 72 85-0**  
Söll hotline: 0 700/92 77 37 55 (14 cents/minute from a German landline)

CLHM2-15998



# Nitrate test 30-120mg/L

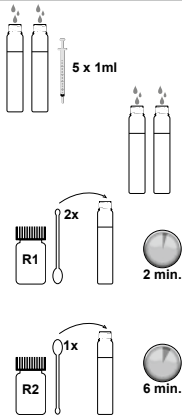
For fresh and salt water

## Test preparation:

- 1 Fill both tubes with 5 x 1ml of test water (syringe) each.
- 2 Then fill both tubes up to the mark with nitrate-free water (e.g. distilled water).
- 3 Add 2 small level measuring spoon of  $\text{NO}_3^-$  R1 to one of the two tubes (test), close with the screw top lid and dissolve by shaking. Leave standing for 2 minutes.
- 4 Add 1 big level measuring spoon of  $\text{NO}_3^-$  R2 to the test, close with the screw top lid and dissolve by shaking. Measure after exactly 6 minutes reaction time.



Measure after exactly 6 minutes reaction time.



## Measuring with AQUA-CHECK:

- 1 Reference measurement.
- 2 Test measurement.

## Evaluation:

- 1 Multiply shown measurement value by 4.
- 2 The result shows the nitrate concentration in the test water.



Standard procedure deviation  $s(x_0)$ :  $\pm 3.0$  mg/L



You will find important information on your measurement value at [www.aqua-check.de](http://www.aqua-check.de). Please observe the safety notes for handling chemicals (see rear).



# Nitrate test

Version 1.0 • 03/2012



**Hazard**

## $\text{NO}_3^-$ R1 (nitrate test)

R51/53: Toxic to aquatic organisms, may cause long-term adverse effects in the aquatic environment.

S2: Keep out of the reach of children.

S24/25: Avoid contact with skin and eyes.

S46: If swallowed, seek medical advice immediately and show this container or label.

S61: Avoid release to the environment. Refer to special instructions/ Safety data sheets.



**Irritant**

## $\text{NO}_3^-$ R2 (nitrate test)

R36: Irritating to eyes.

S2: Keep out of the reach of children.

S26: In case of contact with eyes, rinse immediately with plenty of water and seek medical advice.

S46: If swallowed, seek medical advice immediately and show this container or label.

**Take packaging with product residues to hazardous or special waste disposal.**

Söll GmbH • Fuhrmannstraße 6 • D-95030 Hof • [www.soelltec.de](http://www.soelltec.de) • Tel. +49(0)92 81/ 72 85-0  
Söll hotline: 0 700/92 77 37 55 (14 cents/minute from a German landline)

CLHM2-15997